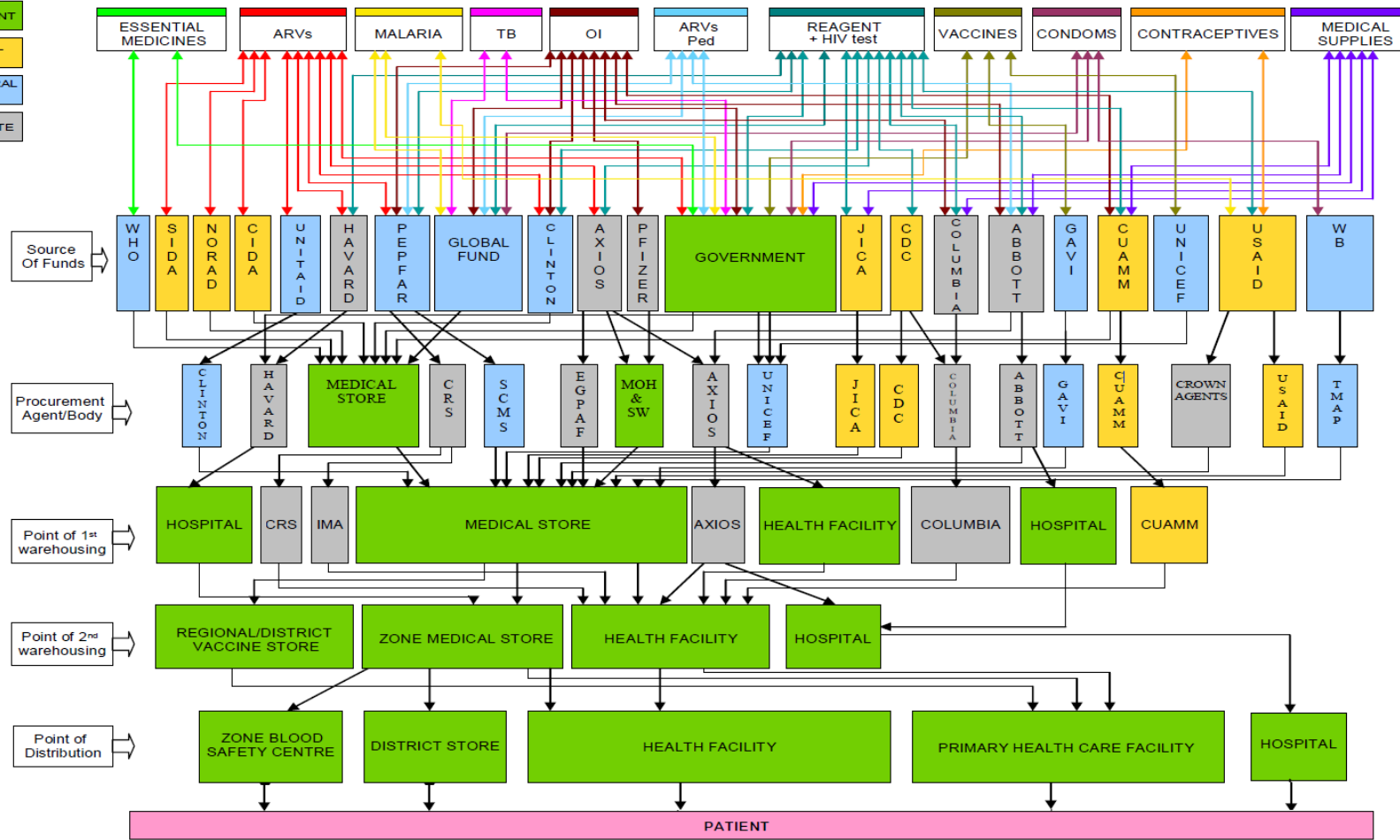
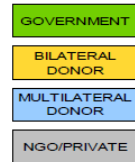




ELECTRONIC LOGISTICS MANAGEMENT INFORMATION SYSTEMS (LMIS)

A New Open Source Option

Medical Commodity Supply Chain Domain



Forecast

Procure

Warehouse

Replenish

- Report/ Requisition
- Order
- Ship
- Receive

Challenges



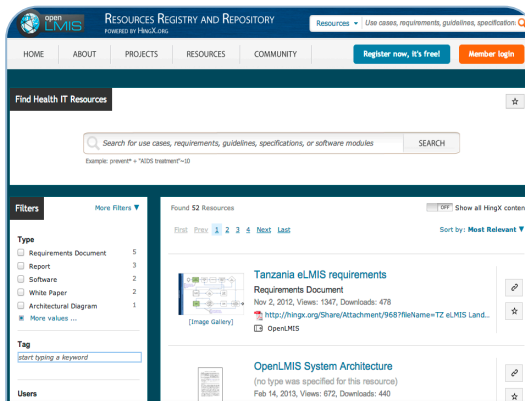
Greentree Principles

- We agree to coordinate our work and share experiences to strengthen health systems. **(Coordinated Approach)**
- We will respond to capacity development needs articulated and driven by the countries. **(Country Ownership & Capacity Development)**
- We are committed to openness, including promotion and use of open standards, and sharing of requirements and other technology knowledge components. **(Openness)**
- We will extract reusable components from appropriate projects, and build new, shared components **(Strategic Reuse)**

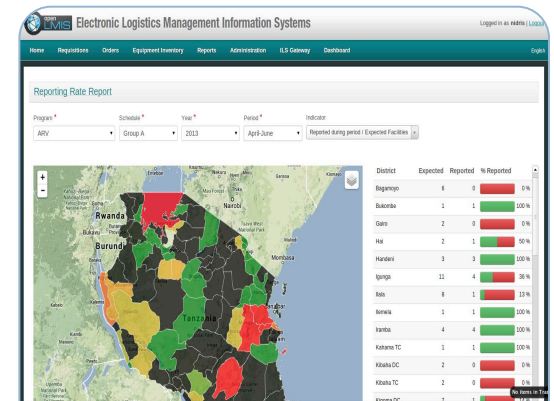
The OpenLMIS Initiative



Community



Repository



Software



OpenLMIS History & Partnerships



- Global Requirements for Logistics Management
- Zambia & Tanzania Requirements using CRDM process

- OpenLMIS Architecture Designed
- JSI, Tanzania, Zambia, VillageReach, and ThoughtWorks join forces to build system

- OpenLMIS Community Plan Developed
- Version 0.9 Global Released
- eLMIS Launched in Tanzania & Zambia

- OpenLMIS Deployed in Mozambique
- Version 1.0 Global Released



Key Features & Benefits

Highly Scalable
Highly Configurable

Automatically Calculated
Replenishment Quantities

Optimized for Low-
Infrastructure
Environments

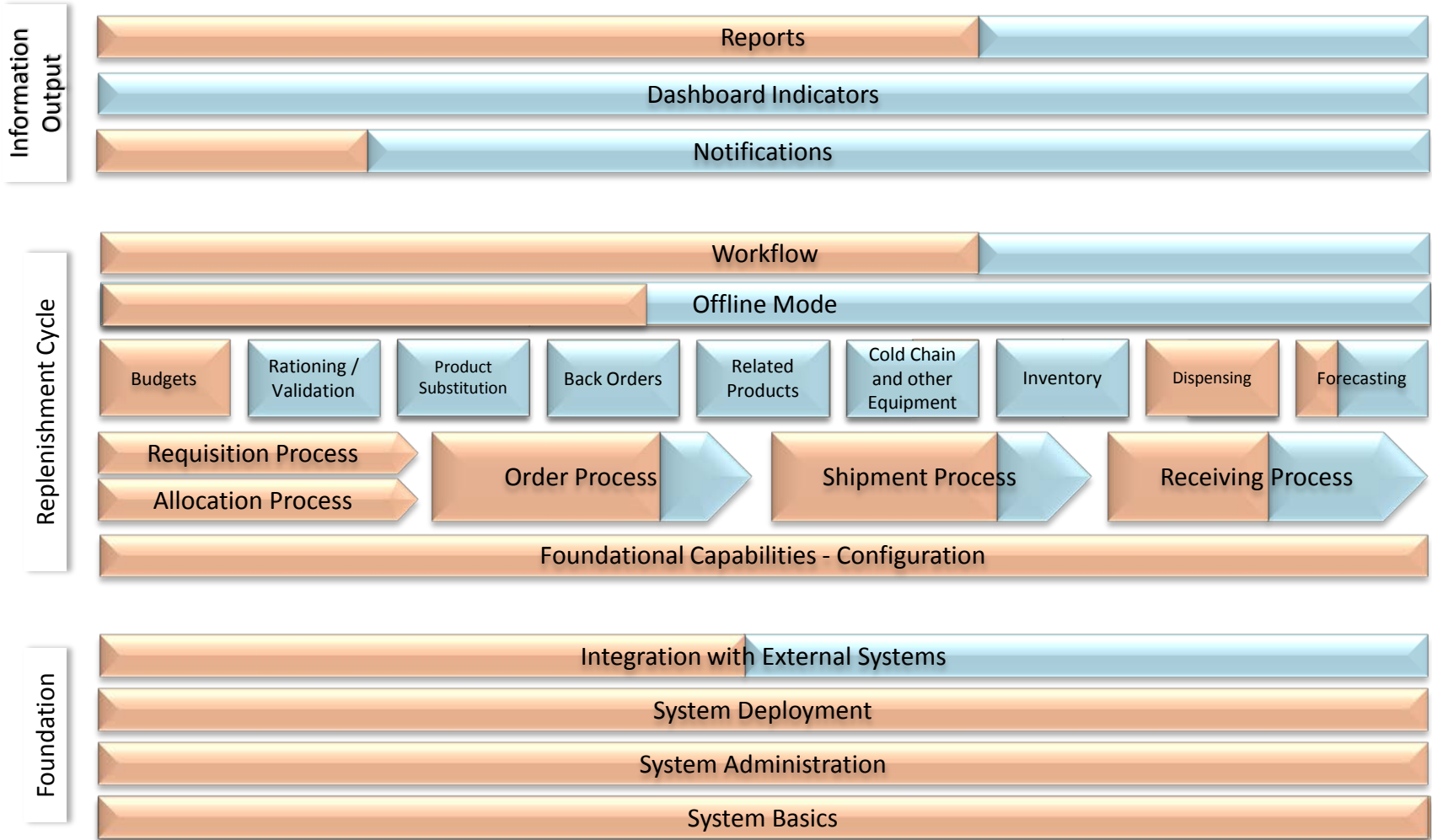
Multi-
Language
Support

Tablet & Mobile Extensions

Automated
Notifications

Web-Based

OpenLMIS Features and Functionality Roadmap



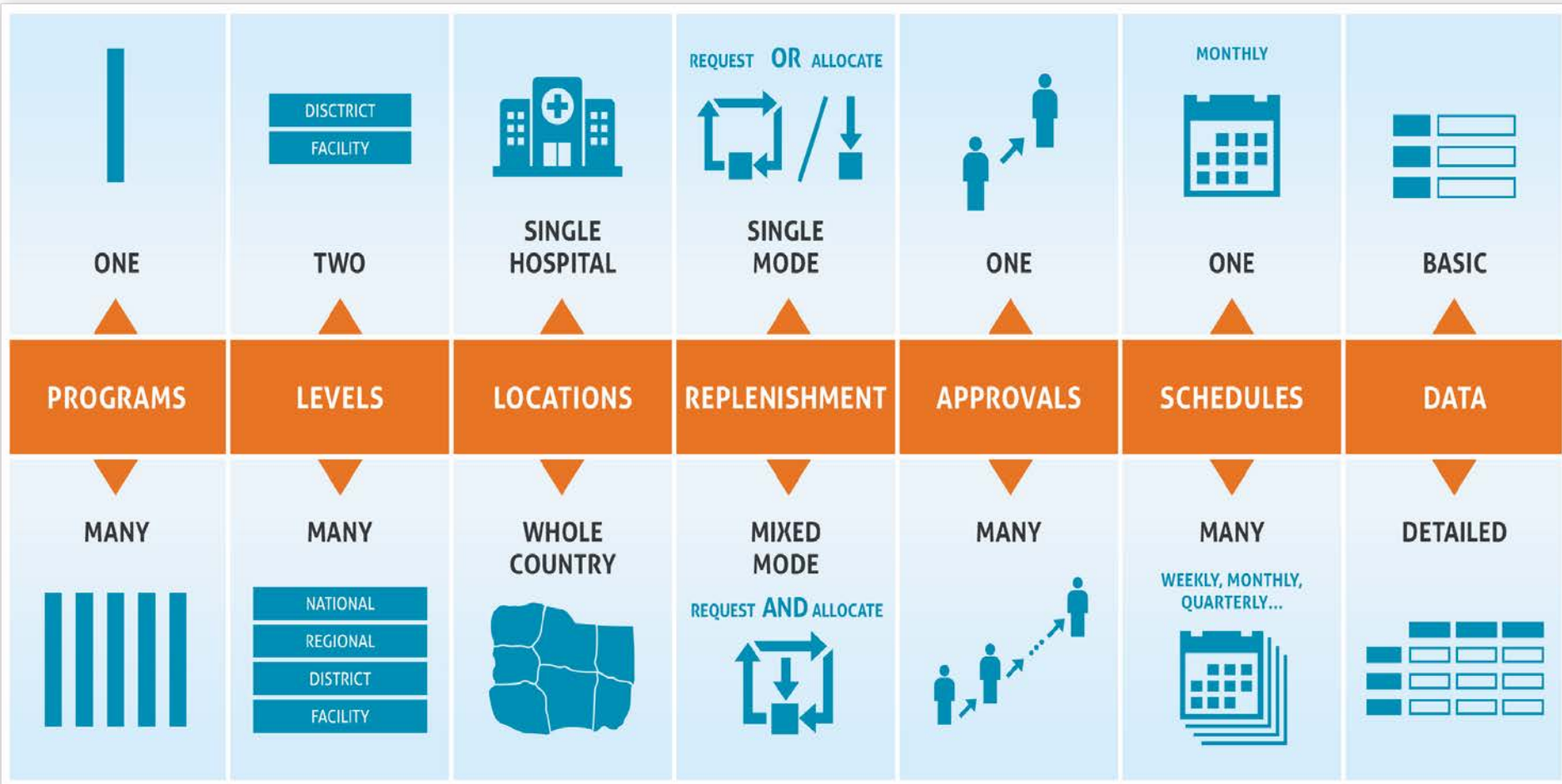
Legend:



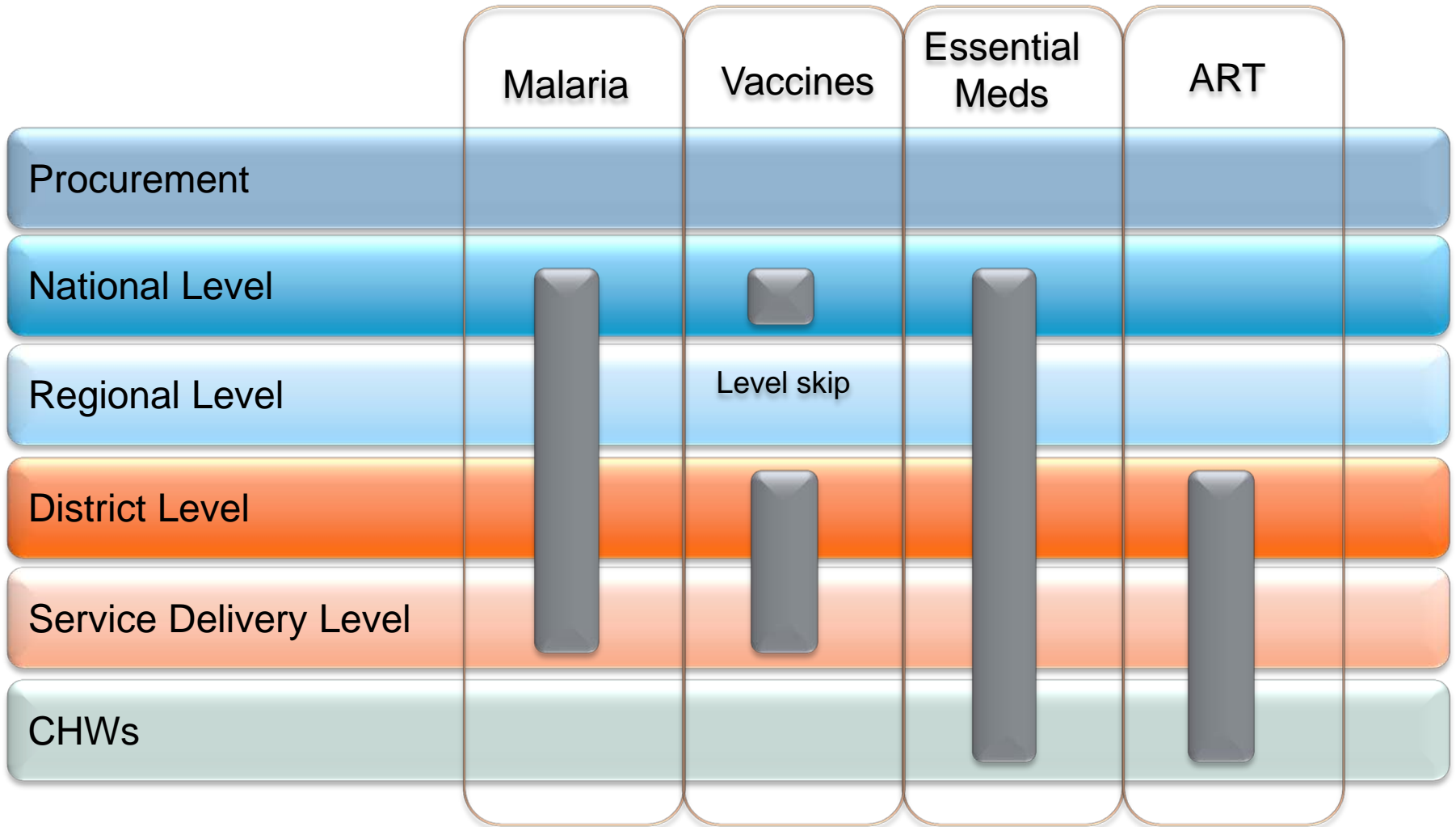
Other Future Features and Functionality:

- Manage products and lots via barcodes
- Product authentication codes
- Handheld device compatibility
- OCR input

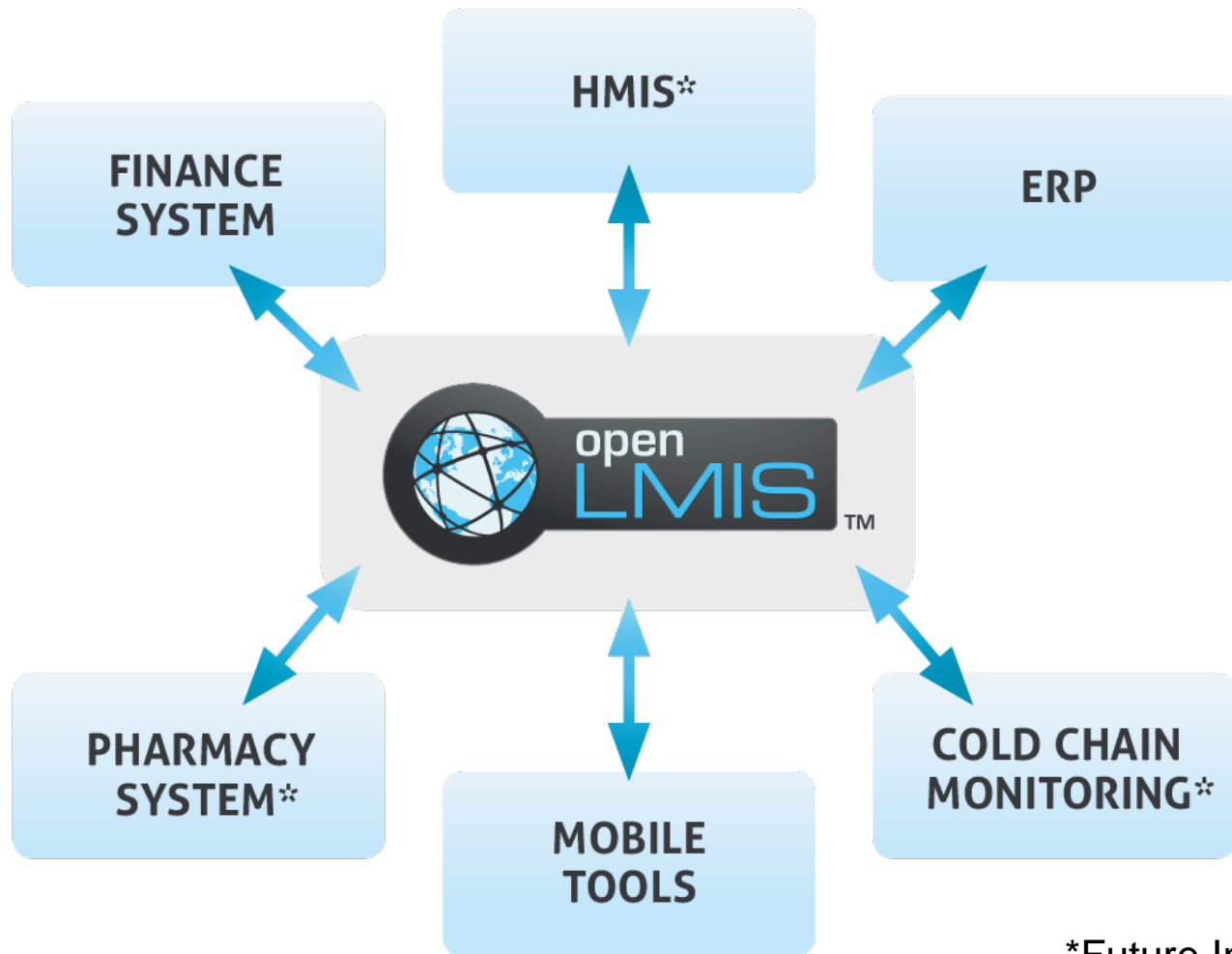
Highly Configurable



Vary Levels by Program



Interoperability



*Future Integrations

Implementations

Tanzania

- Requisition Model
- Nationwide/All Programs & Products, 3,300 facilities
- Integration with Finance and ERP systems
- Multi-Tier Approval Process, Varies by Program
- Quarterly, Staggered Delivery Schedule

Zambia

- Requisition Model
- ART, HIV Tests, Laboratory, and Essential Med Programs
- Facility Addition for offline data entry
- Target roll-out to 300+ facilities

Mozambique

- Allocation Model
- Vaccine Program Only
- Four Provinces
- Province to SDP: Level-skips district

Discussion Questions

- What are gaps in information systems for routine healthcare delivery and disaster relief?
- What's working/not working? What are the promising solutions?
- What's your experience with open source vs. proprietary solutions. Is open source a good model for this space?
- Is OpenLMIS applicable to disaster relief supply chains? How could OpenLMIS evolve to support these needs?