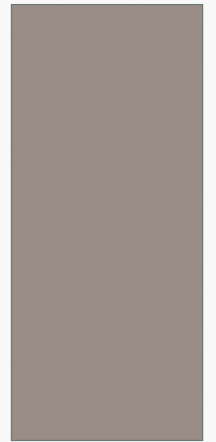


ADVANCING THE HEALTH  
& HUMANITARIAN  
LOGISTICS PROFESSION  
WORKSHOP



# OBJECTIVES:

1. Describe the purpose of IAPHL and HLA
2. Identify the role of People that Deliver in promoting human resources for SCM
3. Discuss the need for SCM professionals and what it takes to create them
4. Identify opportunities for IAPHL and HLA to collaborate and advance the health and humanitarian logistics profession



International Association of  
Public Health Logisticians

# IAPHL-Your Global Gateway to Health Supply Chain Management

HEALTH AND HUMANITARIAN LOGISTICS CONFERENCE  
MEXICO CITY, MEXICO  
JUNE 2014



International Association of  
Public Health Logisticians

## WHAT IS IAPHL?

IAPHL is a professional membership organization  
of over **2,500 supply chain professionals**  
in **115 countries**.

IAPHL's mission is to support professionalization and capacity building of supply chain managers and others working in public health logistics, with a focus on low and middle-income countries.



# HISTORY OF IAPHL

- **Organic beginnings—**
  - Listserv of supply chain training workshop participants evolved into a professional organization
  - IAPHL formed in 2007 and has been growing ever since
  - Business plan was created in 2012 to guide growth and plan new services, and expand funding base
- **Rationale—**
  - Logisticians play a critical yet undervalued role which requires specialized training that is not always available to professionals
  - Lack of a global professional support organization for individuals working in the field of health commodity supply chain management



International Association of  
Public Health Logisticians

## WHERE ARE IAPHL MEMBERS?

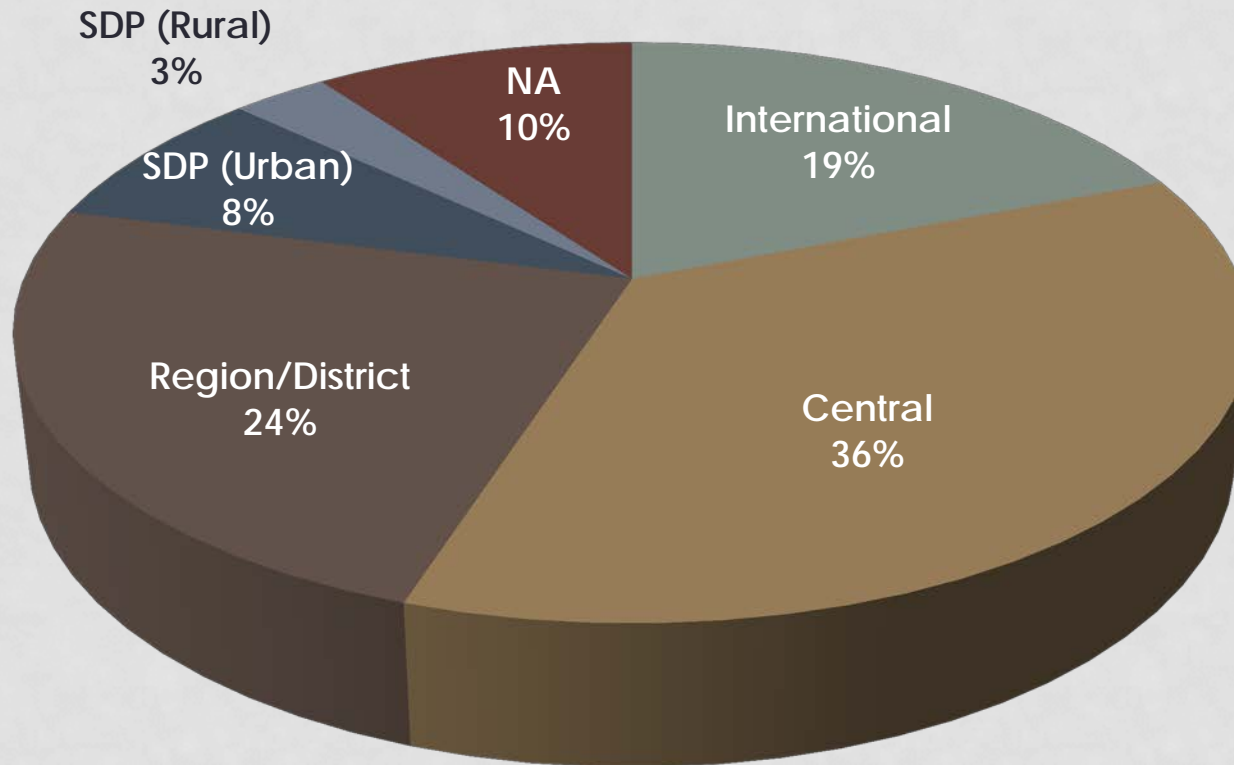


"The IAPHL has been the key link and knowledge gateway for all of us in this forum across the globe. I have learnt a lot from other members of the group on different areas of logistics and supply chain. Access to information has never been easier than through this forum." - Graham Wavimbukie, Department of Health Papua New Guinea



International Association of  
Public Health Logisticians

# IAPHL Membership by Level in the Supply Chain

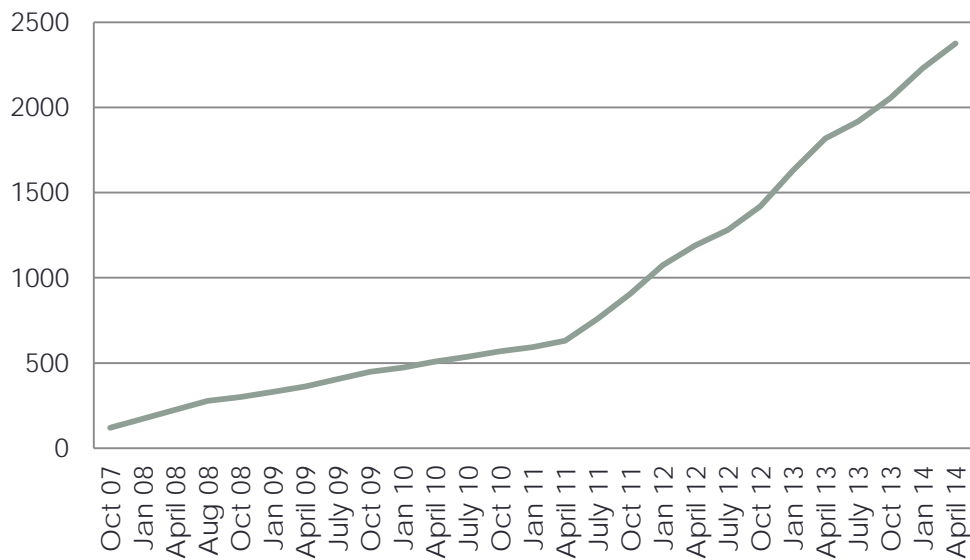




International Association of  
Public Health Logisticians

## INCREASING MEMBERSHIP

IAPHL Membership Growth



*CONGRATULATIONS  
IAPHL!*

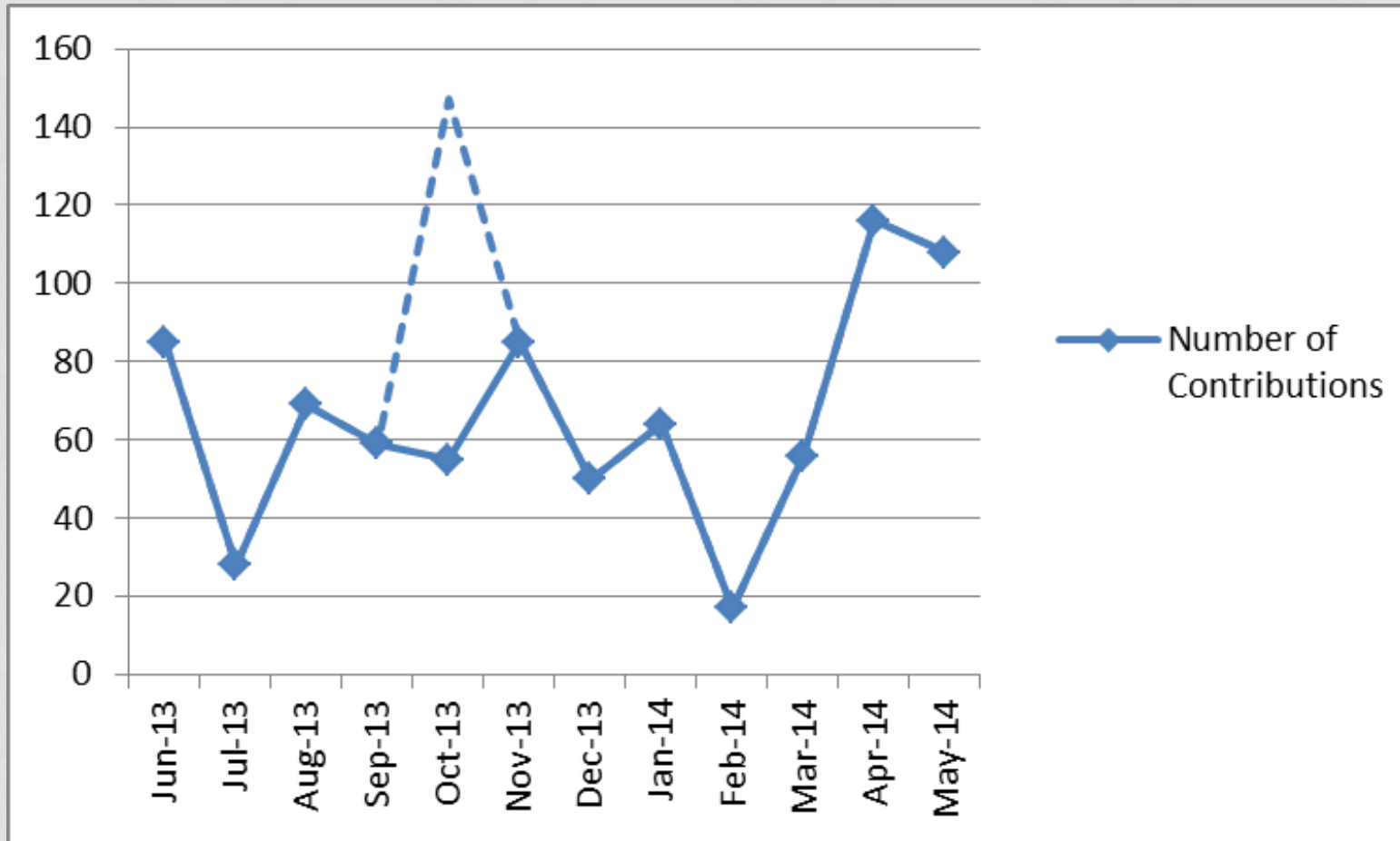
Increased membership enhances quality of information-sharing and offers diverse perspectives on technical issues.





International Association of  
Public Health Logisticians

# DISCUSSIONS ON THE IAPHL LISTSERV



Dotted lines represent the contributions for the month of October by adding 92 contributions on reaching the 2,000 member mark

## MEDIUM-TERM GOALS

- Increase services to members
- Strengthen the e-mentoring program
- Extend alliances with organizations that have a common goal as IAPHL
- Engage a broader array of organizations as stakeholders
- Expand the funding base

## **Expanding services to French and Spanish speakers**

- Currently offers services mainly in English and is missing an opportunity to reach French and Spanish-speaking groups

## **Maintaining funding and ensuring sustainability**

- Need to diversify funding sources to support its operations

## **Continuing to share richer online discussions**

- Need to find moderators that have the expertise and can donate their time for online discussion

## **Sharing information with other similar associations**

- Finding ways to share information with similar associations requires manpower (IT and level of effort) from both ends



International Association of  
Public Health Logisticians

## NEW AND IMPROVED IAPHL WEBSITE

More ways to learn,  
interact, and share  
information

<http://iaphl.org/>

- New Services!
  - Resource Library
  - IAPHL Blog
  - News and Events
  - Jobs page





International Association of  
Public Health Logisticians

# QUESTIONS?





# Background: Humanitarian Logistics Association

Martijn Blansjaar,  
HLA Advisory Committee

# History

- Founded in 2009 as a neutral flagship international body of humanitarian logistics professionals
- Aims to improve operational efficiency and organisational effectiveness, to improve the lives and dignity of the beneficiaries of humanitarian aid
- Strives to enhance professionalism and raise professional standing of HL
- Works with/for members, in research and in career development and education

# Governance

- HLA is a Charity (registered in the UK)
- Entirely run by volunteers (members - especially Directors, interns)
- Board of Directors drawn from large/medium sized NGOs, UN, the Red Cross family, academia and the commercial sector
- Advisory Committee



# Membership *(as of 3/31/2014)*

- **1,630 worldwide**
- 987 full Members, 643 Affiliates
- 1,274 Male, 356 Female (22%)
- **112 countries** from Afghanistan to Zimbabwe. Top 5 countries are: UK, USA, Kenya, Pakistan, Zimbabwe

No membership fees (as yet) but annual donations are suggested: GBP10 / USD15 / EUR12

# Membership Activities

- Website: news, discussion, jobs, etc. Social media
- General Assemblies for members only: in Paris, Bangkok, London, Kenya..
- Humanitarian Logistics Summit to address important issues in HL, with invited guests
- Participation in conferences and exhibitions
- 50+ “Red Dots” in 20+ countries: HLA ambassadors/ correspondents / focal points
- Technical Support Service to obtain expert advice (in coordination with RedR-UK)

# KPI Research Project

- Need for a performance measurement framework (key performance indicators) identified at HLA London Summit in 2011
- Spearheaded by HLA Director at Fritz Institute, concept developed at an HL Conference in Geneva in 2012
- Working Group includes British Red Cross, CRS, IFRC, IRC, Mercy Corps, Merlin, MSF, Oxfam GB, Save the Children International, UNICEF, UNHCR and WFP.

# Accredited Courses

- Drawn up by the Fritz Institute, accredited by CILT and HLA, administered by the Logistics Learning Alliance
- Modular learning on-line with personal tutors
- Certificate in Humanitarian Logistics (also available in French)
- Certificate in Humanitarian Supply Chain Management
- Certificate in Humanitarian Medical Logistics
- Some scholarships are available each year

# Course Achievements

Current enrolled students and graduates, as of 10/1/13:

Course	Students	Graduates	TOTAL
CHL/CLH	775	419	1,194
CHSCM	120	33	153
MedLog	99	68	167
<b>TOTAL</b>	<b>992</b>	<b>481</b>	<b>1,473</b>

*Note: Numbers do not add, as some individuals may be students and/or graduates of multiple courses.*

# Corporate Support & Membership

- Hosting & admin support from CILT-UK
- Various companies/organisations sponsor
- Partnerships (typically freight forwarders) offered to support internships to HLA members
- AIDEX for sponsoring a week's HL training in Brussels in November 2014 for 16 members: see website for details of how to apply

# Income

- Currently reliant on in-kind support but funding required to cover cost of secretariat and on-line presence
- Members, Red Dots, Directors donate their time
- Sponsorship would allow employment of salaried staff to move all activities along faster and expand network benefits

# THANK YOU

Over to you for questions and discussion!



MEETING TOMORROW'S HEALTH CHALLENGES THROUGH  
WORKFORCE EXCELLENCE IN SUPPLY CHAIN MANAGEMENT

PEOPLE  
that  
DELIVER

**Raising the Bar for Health & Humanitarian Logistics Professionals**  
*Health & Humanitarian Logistics Conference*  
**June 2014**



*Improving health outcomes by promoting sustainable workforce excellence in health supply chain management*

70+

member organizations

- country governments
- international agencies
- academic institutions
- implementing partners
- Non-governmental organizations
- private companies

# Vision

PEOPLE  
that  
DELIVER

- The *People that Deliver* Initiative envisions a world where national supply chain workforces are planned, financed, developed and supported in a way that ensures equitable and sustainable access to the medicines and other commodities needed for optimal health outcomes.

# Strategic goals

---

PEOPLE  
that  
DELIVER

- I. Global recognition that strong supply chains are essential for positive health outcomes and require a competent, recognized and supported supply chain workforce with significant technical and managerial capacity.
  
- II. Government and national health institutions demand, recruit and retain appropriately qualified personnel for positions with supply chain responsibilities.

# Strategic goals

---

PEOPLE  
that  
DELIVER

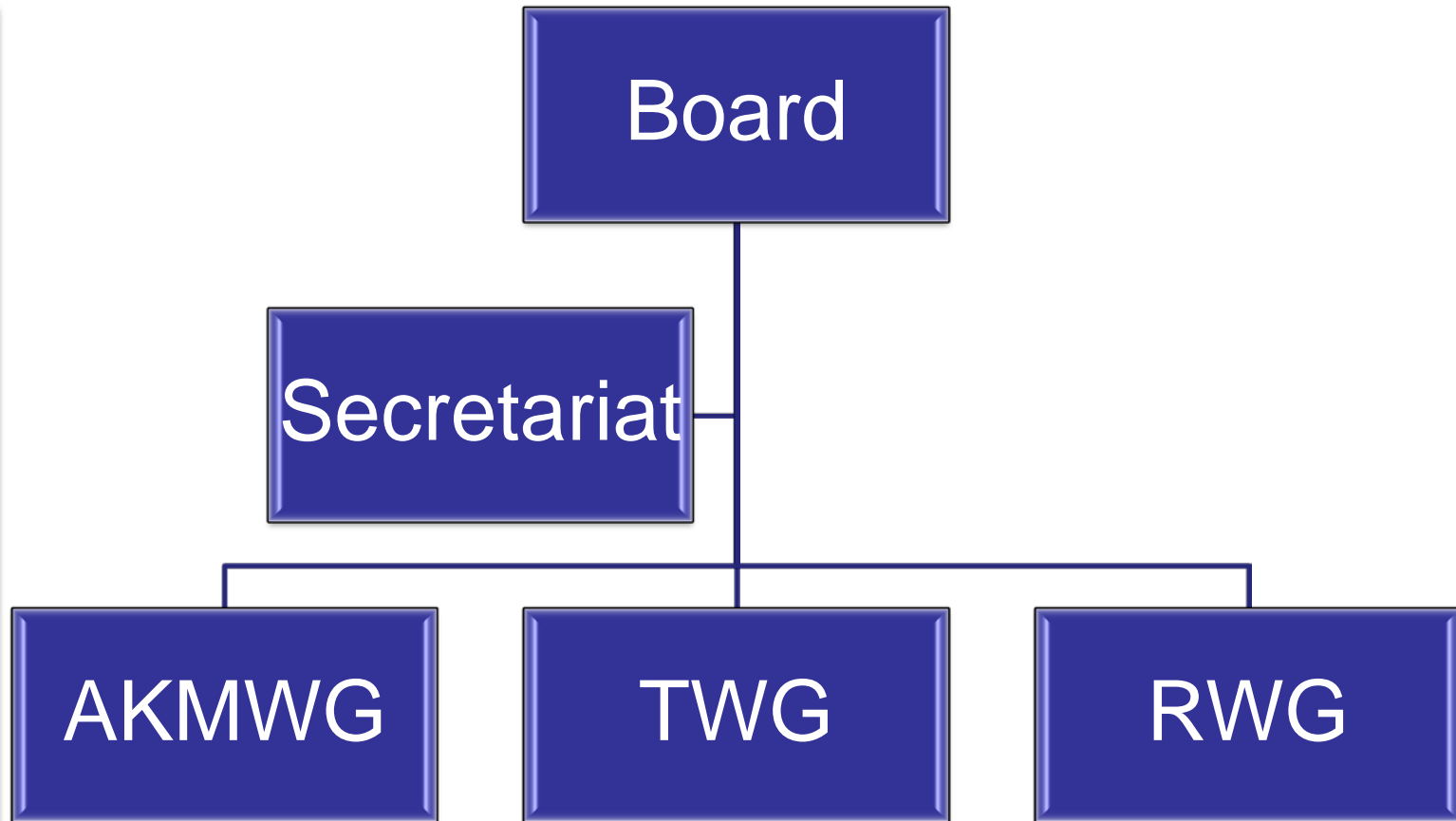
III. Adequate personnel from relevant cadres with appropriate supply chain competencies and qualifications are available.

IV. A repository of evidence-based resources for HR for SCM is established, accessible, used and disseminated.

# Structure of PtD

PEOPLE  
that  
DELIVER

Members



Focus countries

# Current Board

PEOPLE  
that  
DELIVER



- country governments
- international agencies
- academic institutions
- implementing partners
- nongovernmental organizations
- private companies

# PtD focus countries

PEOPLE  
that  
DELIVER

**Dominican  
Republic**



**Ethiopia**



**Indonesia**



**Burkina Faso**



**Liberia**



**Mozambique**



**Namibia**





# PtD as an advocate & resource



- Become a PtD member (go to [www.peoplethatdeliver.org](http://www.peoplethatdeliver.org))
- Join a PtD working group (e-mail [info@peoplethatdeliver.org](mailto:info@peoplethatdeliver.org))
- Become a PtD Twitter follower (@PplthatDeliver)
- Update LAPTOP with SCM courses offered by your own institution  
(visit <http://www.rhsupplies.org/resources-tools/laptop>)
- Tell us your HR for SCM stories or projects
- Advocate for HR for SCM within your organization
  
- For more information, contact
- the Secretariat: [info@peoplethatdeliver.org](mailto:info@peoplethatdeliver.org)
- the Executive Manager: [executivemanagerptd@unicef.org](mailto:executivemanagerptd@unicef.org)

# THANK YOU FOR YOUR PARTICIPATION!

- Join IAPHL and HLA today!
  - <http://iaphl.org>
  - <http://humanitarianlogistics.org/>
- Upcoming conferences
  - People that Deliver: Copenhagen, Oct 29-30
    - Abstracts due June 30<sup>th</sup>
  - Global Health Supply Chain Summit: Accra, Nov 17-19